



**URBAN GROWTH  
BOUNDARY AMENDMENT**



**FISHER ARNOLD**

**ENGINEERS | ARCHITECTS | CONSULTANTS | PLANNERS**

# URBAN GROWTH BOUNDARY

---

- Increase size of Town (once fully annexed) to 19,158 acres.
- Current development patterns:
  - Eastward North and South of Hwy 57 (Riveredge, Lafayette Station, Lafayette Pointe, Rossville Reserve, Saunder's Creek)
  - Westward South of Hwy 57 (Highlands)
- Existing landowners expressing interest in being in the Town's Corporate Limits.
- Protecting the Hwy 194 Gateway into Rossville.
- Currently providing Emergency Services to portions of these areas.



# Purpose

---



- Establishes definitive boundaries between municipalities.
- Establishes areas outside of the current municipal limits that are reasonable to anticipate annexation and growth within the next 20 years.
- Provides a logical method to manage growth of a community.



# Purpose

---



- Establishes definitive boundaries between municipalities.
- Establishes areas outside of the current municipal limits that are reasonable to anticipate annexation and growth within the next 20 years.
- Provides a logical method to manage growth of a community.
  - Emergency services



# Purpose

- Establishes definitive boundaries between municipalities.
- Establishes areas outside of the current municipal limits that are reasonable to anticipate annexation and growth within the next 20 years.
- Provides a logical method to manage growth of a community.
  - Emergency services
  - Public utilities





# Purpose

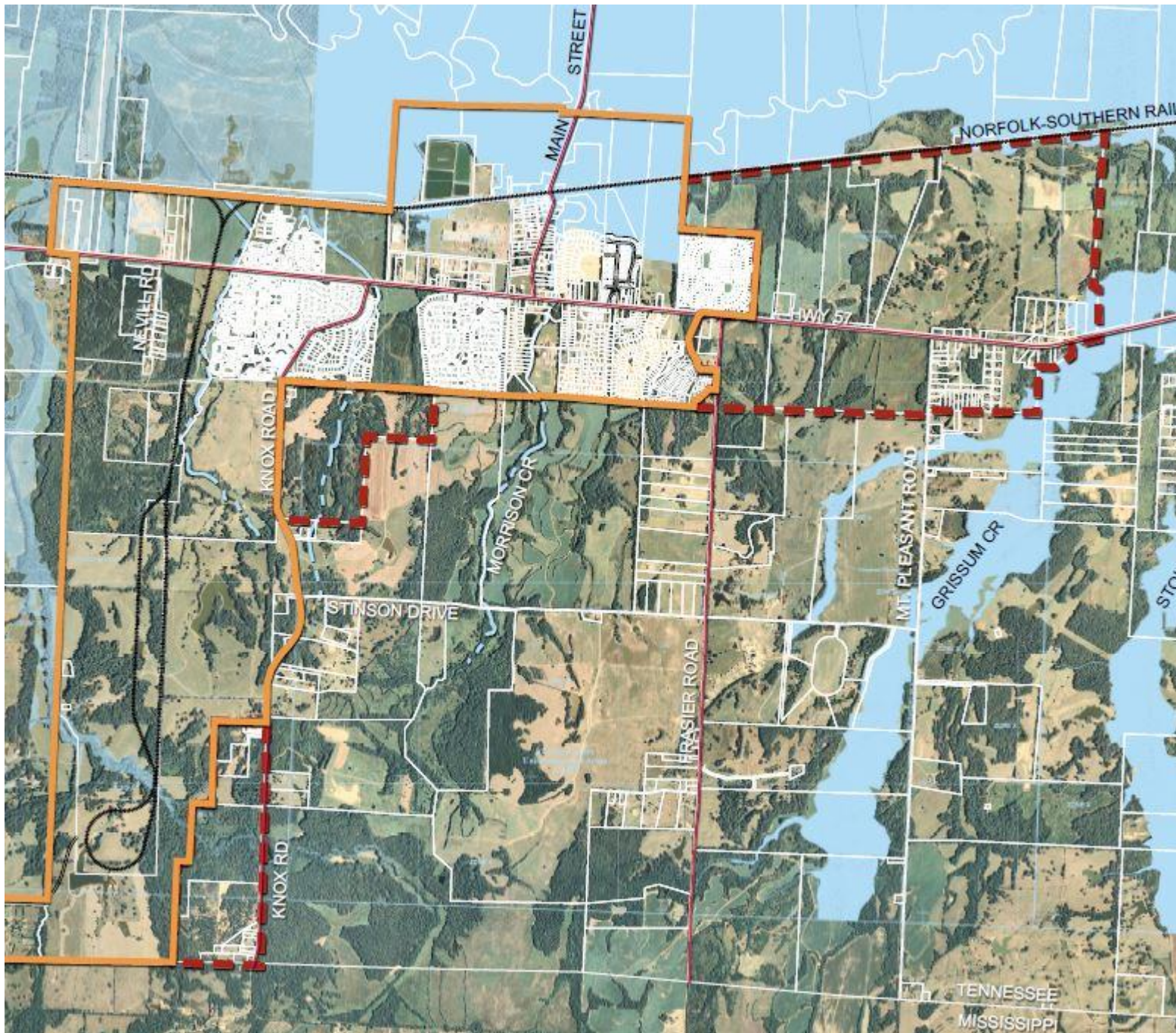
- Establishes definitive boundaries between municipalities.
- Establishes areas outside of the current municipal limits that are reasonable to anticipate annexation and growth within the next 20 years.
- Provides a logical method to manage growth of a community.
  - Emergency services
  - Public utilities
  - Zoning and land use



# Annexation VS. Urban Growth Boundary

- **THE URBAN GROWTH BOUNDARY DOES NOT MEAN THE PROPERTY IS AUTOMATICALLY GOING TO BE ANNEXED.**
- Process for Annexation:
  - Referendum
  - The Property Owner requests/petitions the municipality in writing to be annexed
    - Contiguous to the current municipal limits.
    - Property Owner owns property currently in the municipal limits contiguous to property proposed to be annexed.
    - The municipality provides services to the area/property to be annexed.
- T.C.A. 6-51-104 Resolution for annexation by referendum





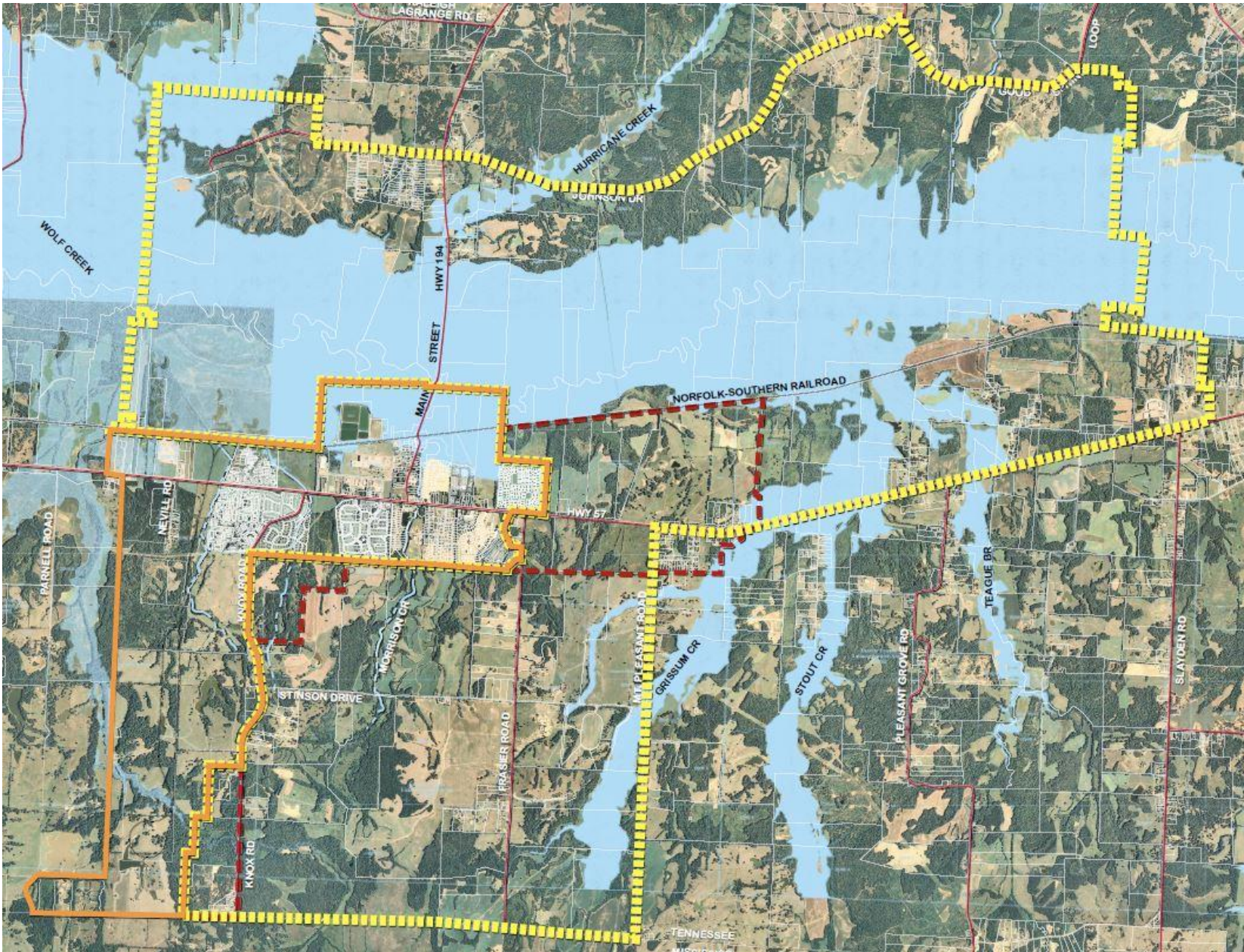
# CURRENT URBAN GROWTH BOUNDARY

**CURRENT TOWN LIMITS - 382 acres**  
**CURRENT UGB - 462 acres**



**FISHER ARNOLD**  
ENGINEERS | ARCHITECTS | CONSULTANTS | PLANNERS





# PROPOSED URBAN GROWTH BOUNDARY

PROPOSED UGB - 19,158  
acres



# *QUESTIONS*

---



FISHER ARNOLD

ENGINEERS | ARCHITECTS | CONSULTANTS | PLANNERS